

A woman is shown from the chest up, wearing a white, long-sleeved lace jacket. The jacket features a repeating geometric pattern of concentric circles and dots. The front of the jacket is laced up with white cords and gold-toned circular ornaments. She is also wearing a necklace with similar gold-toned ornaments. The background is a solid, deep blue color.

HERMINA  
ATHENS

## RIZES / ROOTS

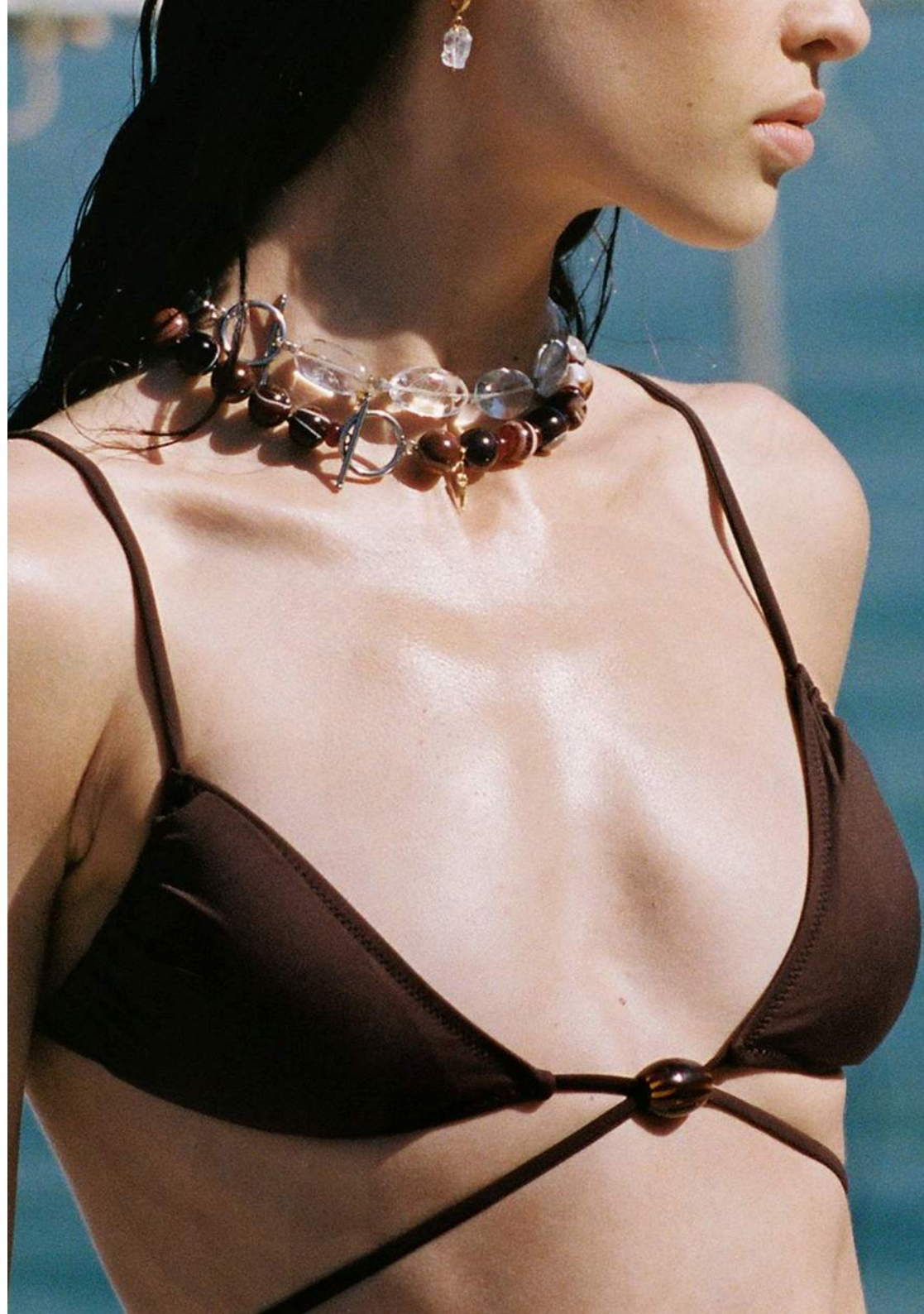
---

Inspired by the roots and heritage of the brand itself. A tribute to Greek mythology, timeless symbolism, and the origins of its creative identity.

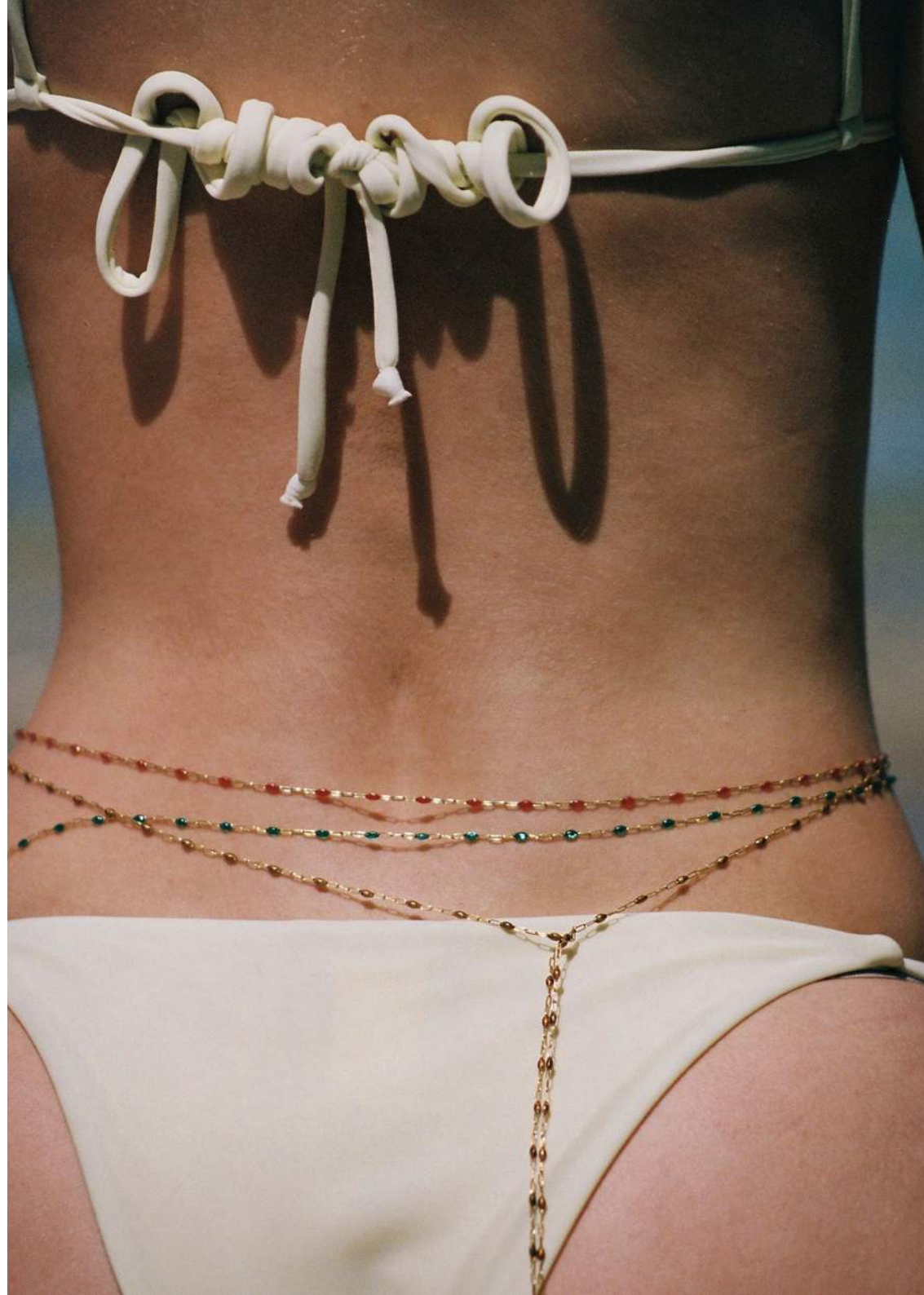
Revisiting iconic mythological characters featured on Hermina's signature charms, the collection blends ancient references with a modern, effortless aesthetic and the art of the handmade.







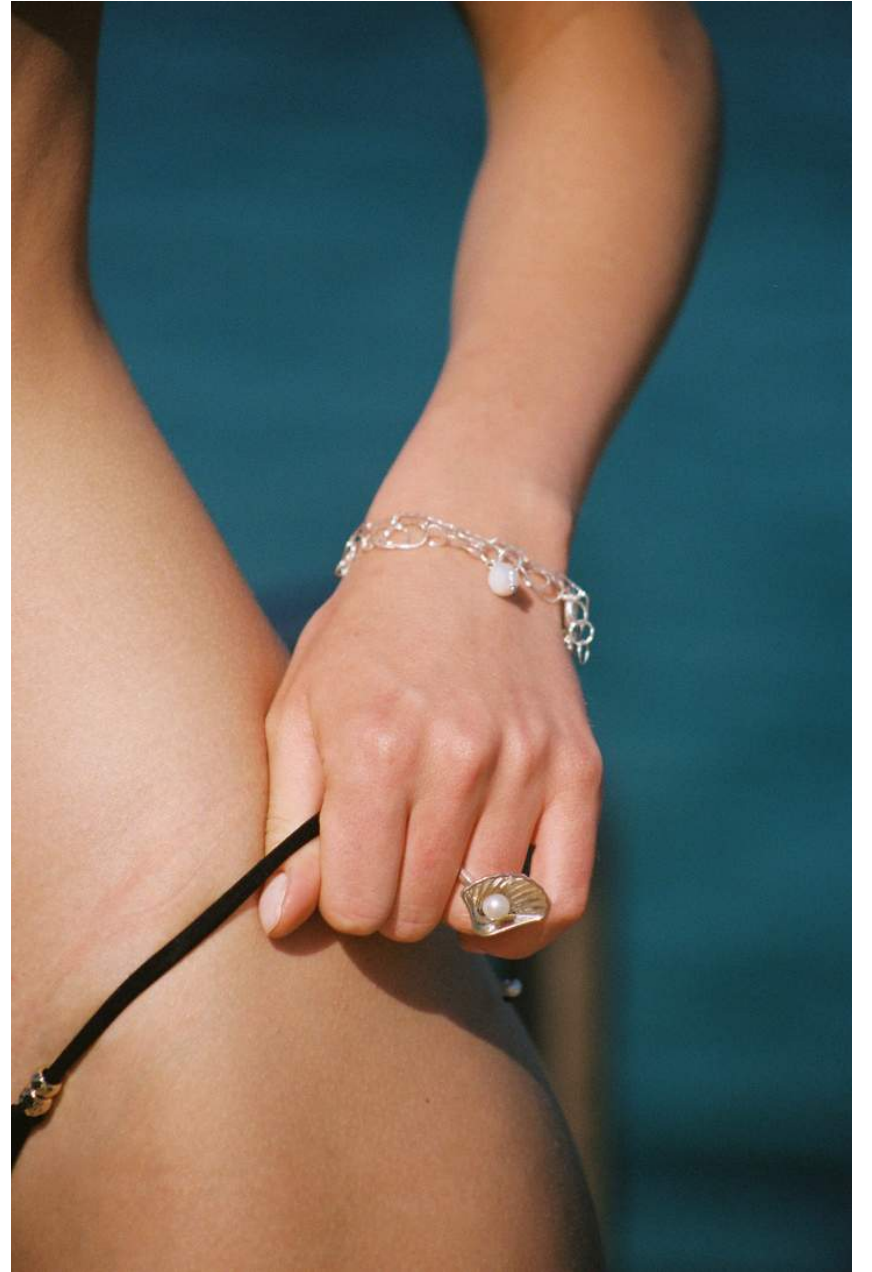






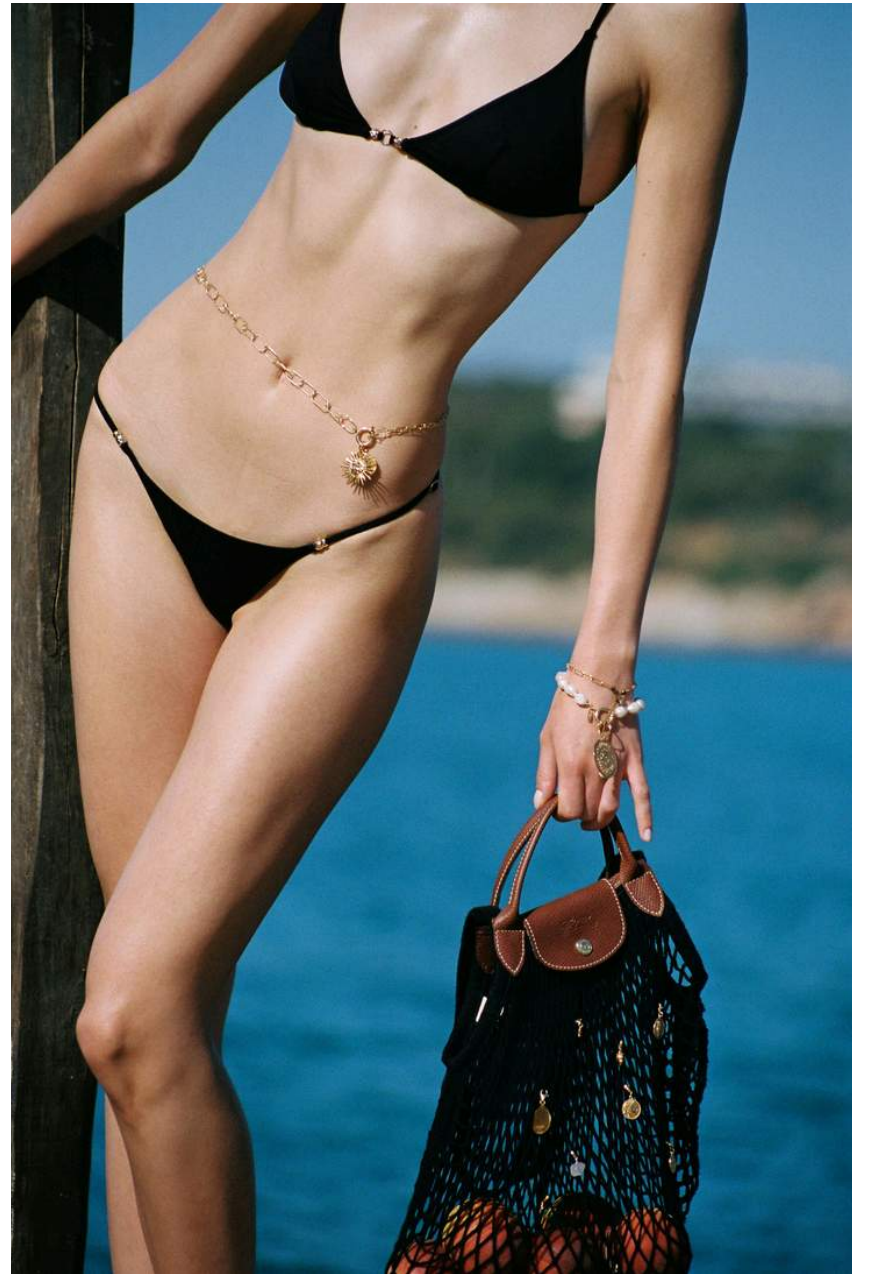














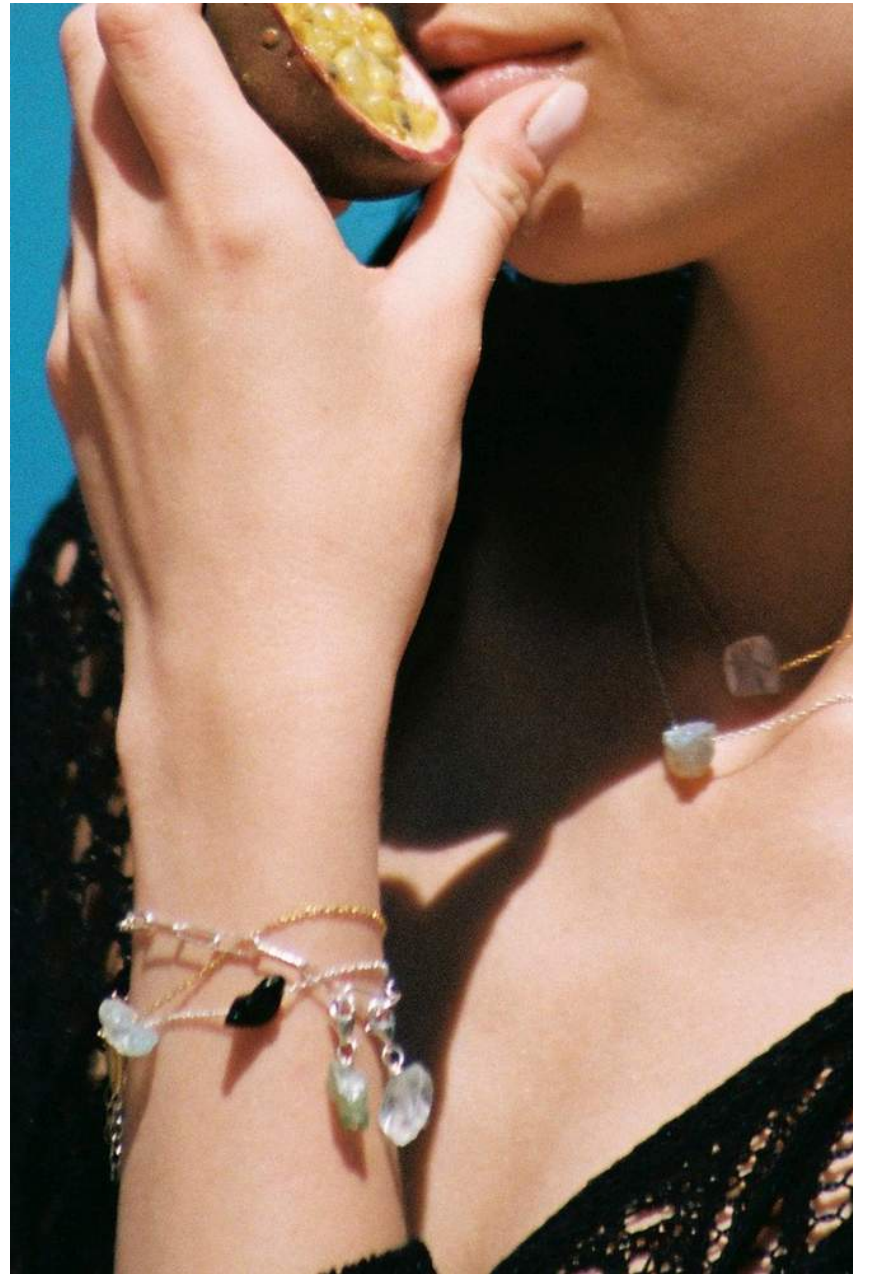














HERMINA  
ATHENS